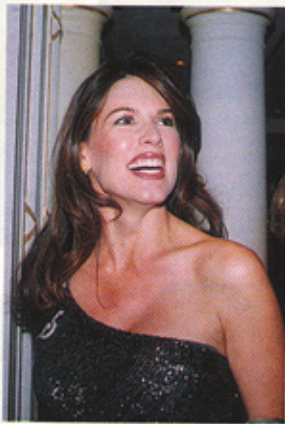


A connoisseur's guide to a discerning lifestyle

WORLD OF LUXURY
EPICUREAN **L**IFE
AUGUST - OCTOBER 2002 £4 / \$6



Mrs Elaine Paige and Laurence Graff



Miss Christina Estrada



Isabelle Kristensen



Dame Shirley Bassey and Miss Liz Brewer



Miss Aline Hays of Duns and Mrs Ivana Trump



Mr Andy Wong and two elves



Mr Andrew Logan

LIZ BREWER CHARITY FASHION SHOW
At this amazing charity fashion extravaganza put on by Liz Brewer (who else) star names were accompanied by flowing champagne and designer clad elves - quite breathtaking. The party was held at the Millenium Hotel in Berkeley Square the event raised a great deal for charity.